

# MONTHLY MEMBERSHIP PROGRESS REPORT

LOCATION SASKATCHEWAN

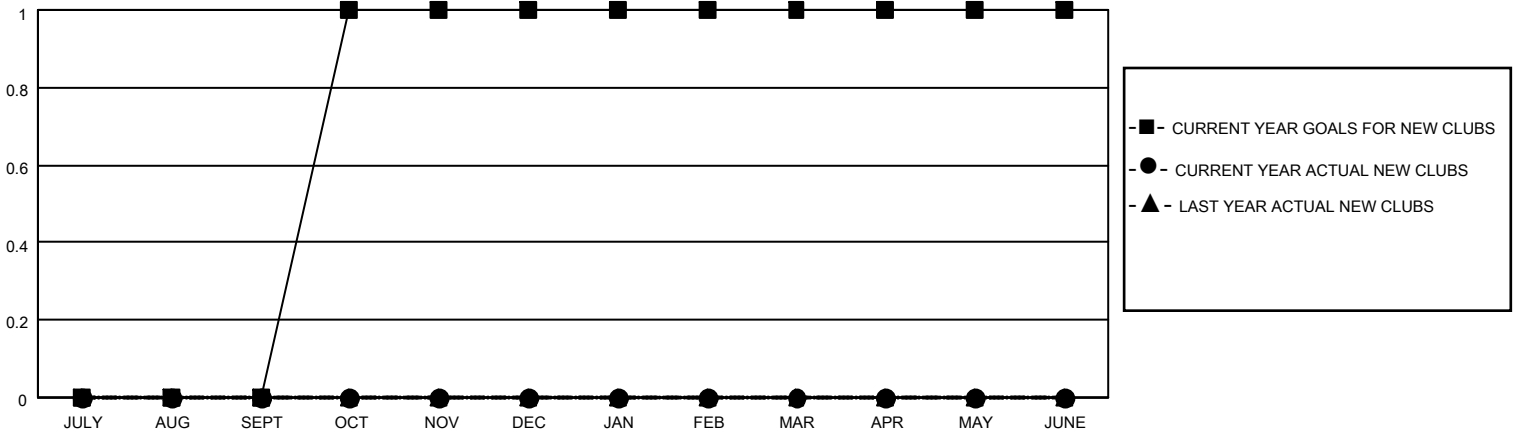
District 5 SKN

Results as of: 12/31/2020

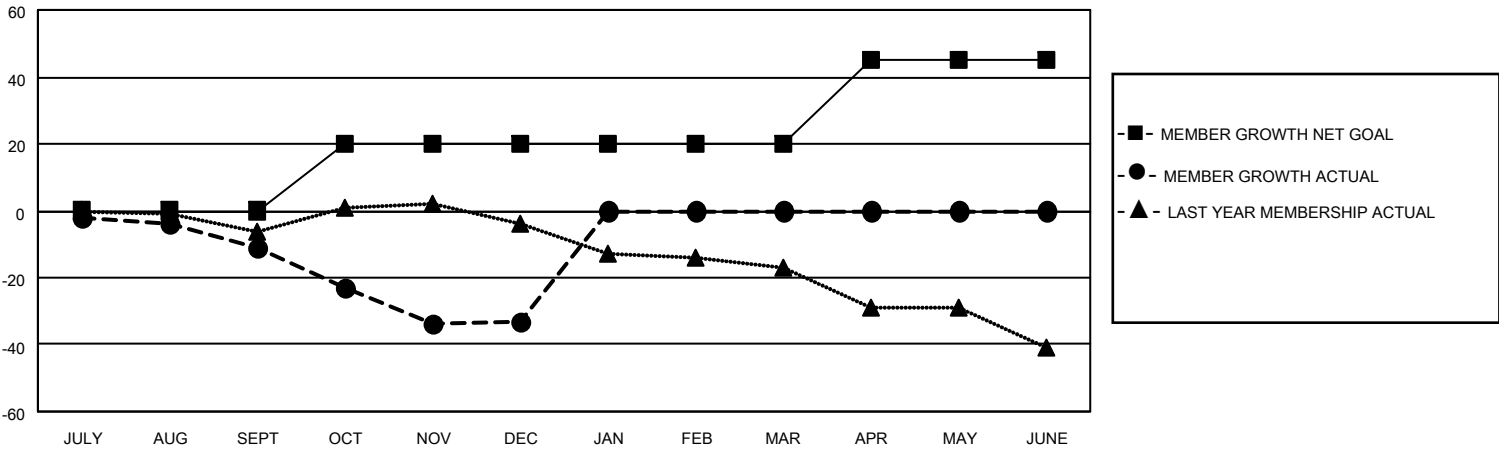
Clubs			
RESULTS FOR 2020-2021			
QUARTER	NEW CLUB GOAL	NEW CLUBS	DROPPED CLUBS
JULY/AUG/SEPT	0	0	0
OCT/NOV/DEC	1	0	1
JAN/FEB/MAR	0	0	0
APR/MAY/JUNE	0	0	0

Members			
RESULTS FOR 2020-2021			
QUARTER	MEMBER GROWTH NET GOAL	MEMBER GROWTH ACTUAL	DROPPED MEMBERS ACTUAL (including transfers)
JULY/AUG/SEPT	0	5	13
OCT/NOV/DEC	20	7	29
JAN/FEB/MAR	0	0	0
APR/MAY/JUNE	25	0	0

**GOALS AND ACTUAL NEW CLUBS CUMULATIVE**



**GOALS AND ACTUAL MEMBERS CUMULATIVE**



<b>DROPPED CLUBS: 1</b>	7 CLUBS OF 58 ADDED 1 OR MORE NEW MEMBERS	<b><u>GENDER DISTRIBUTION</u></b> MALE            817 (74.61%) FEMALE         278 (25.39%)
<b><u>DROPPED MEMBERS</u></b> DECEASED            9 CLUB CANCELLED      0 OTHER                 33 <hr/> TOTAL                 42	<a href="#">CLICK HERE FOR CUMULATIVE MEMBERSHIP DATA</a>	TOTAL FAMILY UNIT MEMBERS            227  FAMILY MEMBERS PAYING HALF DUES            115